

Put your trust in an industry leader

When you partner with DegreeC, you are partnering with a trusted industry leader. We have technological expertise that few vendors can match. Most importantly, with DegreeC, you have one source for design, products, services, and support. Our solutions include:

- ▶ Air velocity sensors for installed applications, and lab-grade instruments for testing and analysis of airflow from our Cambridge AccuSense line.
- ▶ Thermal design, analysis and testing services, and custom products (such as, fan trays, controllers, sensors and heatsinks) from our Center for Airflow and Thermal Technologies, commonly known as CATT.
- ▶ Off-the-shelf thermal management products such as intelligent fan trays, controllers, heatsinks and other products to manage your cooling system from our PRONTOflow line.

Choose a partner with proven expertise

Our services are designed to help customers maximize the benefits of our products and applications and achieve a rapid return on investment. Each time you work with us, you can be comfortable that we are leveraging our experiences drawn from hundreds of successful projects and satisfied customers. From sales and application support to manufacturing and delivery, we are committed to helping you achieve your goals. Our integrated service approach gets the most out of your DegreeC solution.

Employees committed to excellence

At DegreeC, we pride ourselves on our ability to deliver on promises. We strive to build partnerships with our customers and to truly listen to what you have to say. Many of our innovations have been the result of working together with our customers and solving their challenging problems.

Every employee at DegreeC is invested in your success. We are dedicated to providing you the best thermal and airflow solutions for the world's most demanding applications.



Engineered airflow.
Intelligent cooling.



Engineered airflow.
Intelligent cooling.

Degree Controls, Inc.

US & International
18 Meadowbrook Drive
Milford, NH 03055
USA

Toll Free: 877-degreeC (US only)
Tel: 603-672-8900
Fax: 603-672-9565

www.degreeC.com

Japan
Suite 201 3-5-4, Minato
Chuo-ku, Tokyo 104-0043
Japan

Tel: +81 (3) 5542-6380
Fax: +81 (3) 5542-6381

www.degreeC.co.jp

India
#54, Navarangam Lane North II
Med. College P.O., Trivandrum
India

Tel: +91 471 3095665
Fax: +91 471 2443665



Degree Controls, Inc.

The most innovative name in thermal and airflow management has provided organizations around the world with sophisticated solutions for today's design problems. Since 1997, we have been advancing our technology and delivering on our mission to be the leading provider of airflow management products and services. Today we are recognized as both a pioneer and innovator in this field. We pride ourselves on successfully serving challenging industries such as telecommunications, information technology, medical equipment, cleanroom, and critical containment.

DegreeC - The complete solution for your most challenging airflow and thermal problems.

Leave your airflow and thermal engineering needs to us.

Reduce your time to market.

Rise above your competition. DegreeC's expertise can facilitate your product development cycle and speed your entry to the market. Do it right the first time.

Focus on your core competence.

We are your partner and are here to provide you peace of mind with a proven total solution. Use your company's time, resources, and expertise to efficiently meet your objectives.

Validate your designs in our lab not in the field.

Decrease the potential for costly field failures and loss of market credibility. Our research and engineering staff can validate your designs and ensure thermal and airflow performance where and when it is needed.

Airflow management is essential for heat removal and to keep process and product clean.

The majority of electronic product failures are tied to thermal issues. A solution that can improve airflow and remove heat solves a major design challenge for many of today's products.

Airflow is the primary way to keep processes pure and contain contaminants in clean environments such as bio-sciences laboratories and semiconductor manufacturing. Our airflow sensing and management solutions ensure dependable, clean environments.

Whether you need to measure and control airflow, rectify a current thermal problem, or develop a new product with a sound thermal design, you can rely on us.



Sensors and instruments for measuring airflow

These products offer versatility and accuracy in evaluating system airflow and thermal performance and are designed to meet your testing and continuous monitoring requirements.

- Airflow sensors and switches for installed applications
- Multipoint air velocity test instrumentation
- Temperature-compensated airflow measurement
- Small sensor heads for remote and compact locations



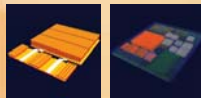
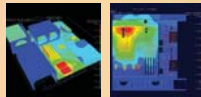
Airflow and Thermal Solutions Family



Thermal and airflow design, test services, and custom thermal solutions

The design of dependable products starts with precise thermal and airflow engineering. Our experts have extensive experience in design of airflow and thermal environments and thermal management solutions.

- Electronics chassis, board, and component level thermal design
- Unique heat sink solutions for difficult thermal problems
- Validation and compliance testing to avoid costly product redesign
- Custom airflow and thermal management solutions, such as fan trays, controllers, sensor and heatsinks, for high reliability telecom, military and medical products



Off-the-shelf thermal management products

A reliable thermal environment requires a dependable thermal management system. This standard product line of intelligent thermal management controllers and fan trays is fully configurable by the user to suit your needs rapidly.

- For critical time-to-market applications
- Adaptive thermal management for changing operating conditions
- Configurable user settings for fan quantity and alarm thresholds
- Excellent for in-the-field use such as installed data centers and telecommunication equipment

